

Alg 2.2 p 92

#50  $980 + -5.7(y) = SA$

1940=0  $980 + -5.7(61) = 632.3$

2001=61

---

#51 50 @ \$3.50 = \$175

next day  $-.25 \rightarrow \$3.25 = \$162.5$

#52 a

$$V = 5.62 \text{ Km}^3 \text{ (B) } 1912 \text{ (0)}$$

$$\begin{array}{r} 1913 \text{ (0)} \\ 1971 \text{ (58)} \\ \hline 13 \\ 58 \end{array}$$

$$V_{1971} = 5.62 + \left[ \frac{(-.02241)}{58} \right] (58)$$
$$= 4.32022 \text{ (B) Km}^3$$

$$V = 4.32022 + \left[ \frac{(-.00565)}{23} \right] (23)$$

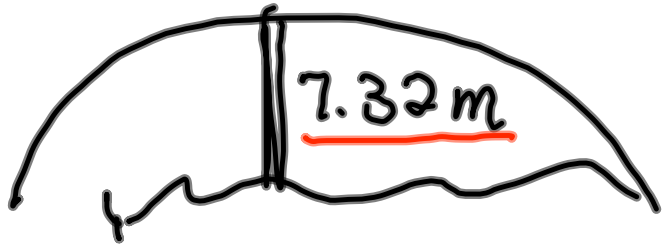
~~.006~~

$$\begin{array}{r} 1971 \text{ (0)} \\ 1994 \text{ (23)} \\ \hline 71 \\ 23 \end{array} \text{ (B)}$$

$$V = 4.19027 \text{ Km}^3$$

$$\frac{1}{3} (\text{Change}_{1971} + \text{Change}_{1994})$$

#53)

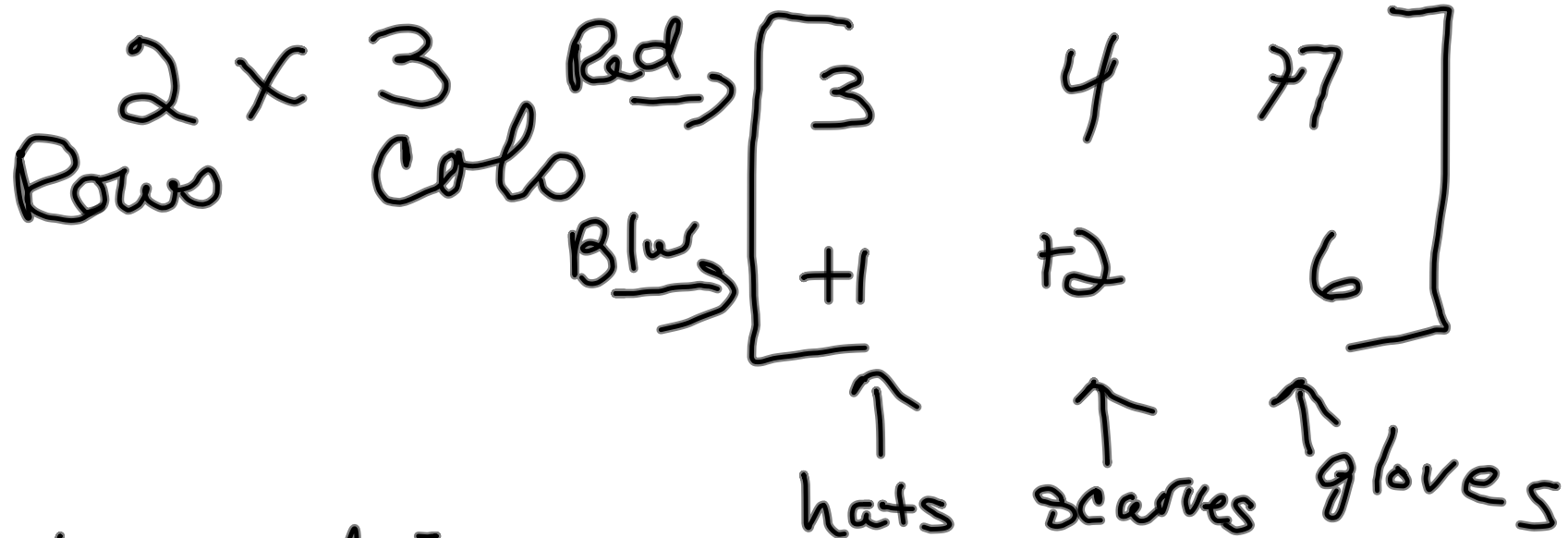


m dm cm mm  
7.32 73.2 732 7320  
x10 72.9729 7290  
729m

-2mm

$$7320\text{mm} + (-2\text{mm}) (15) \\ 7320 + -30 = 7290\text{mm}$$

Ext. p94 Matrix dimensions  
Rows by Cols. (RC cola)  
|||



+ if dim match  
 $2 \times 2 + 2 \times 2$

$$\begin{bmatrix} 1 & -4 \\ 3 & 7 \end{bmatrix} + \begin{bmatrix} 2 & -10 \\ 5 & -72 \end{bmatrix} = \begin{bmatrix} 3 & -14 \\ 8 & -5 \end{bmatrix}$$

$$\begin{bmatrix} \underline{2} & \boxed{-4} \\ \underline{3} & \textcircled{-5} \end{bmatrix} \begin{matrix} - \\ \downarrow \end{matrix} \begin{bmatrix} \underline{-6} & \boxed{-2} \\ \underline{7} & \textcircled{10} \end{bmatrix} = \begin{bmatrix} 8 & -2 \\ -4 & -15 \end{bmatrix}$$

$$2 - (-6) = 2 + 6 = 8$$

$$-4 - (-2) = -4 + 2 = -2$$

$$3 - 7 = 3 + -7 = -4$$

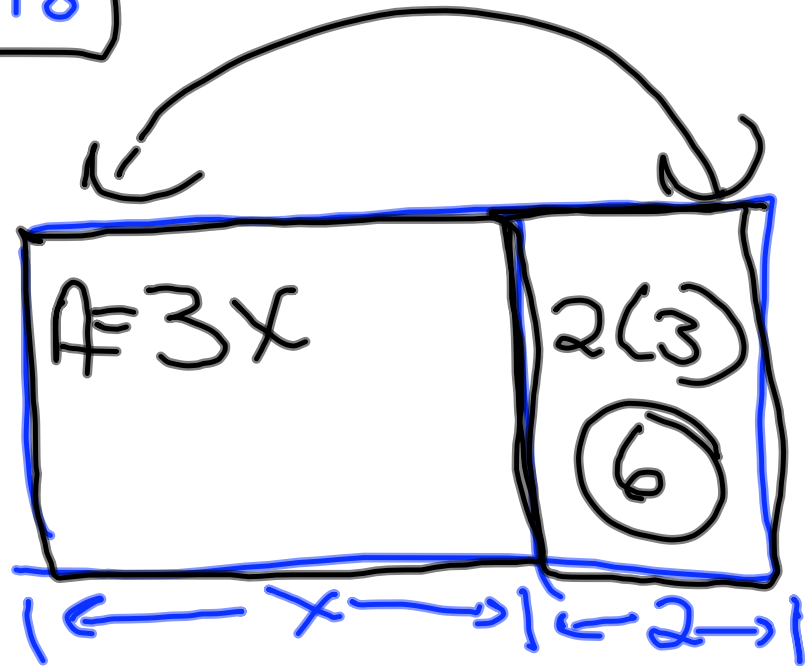
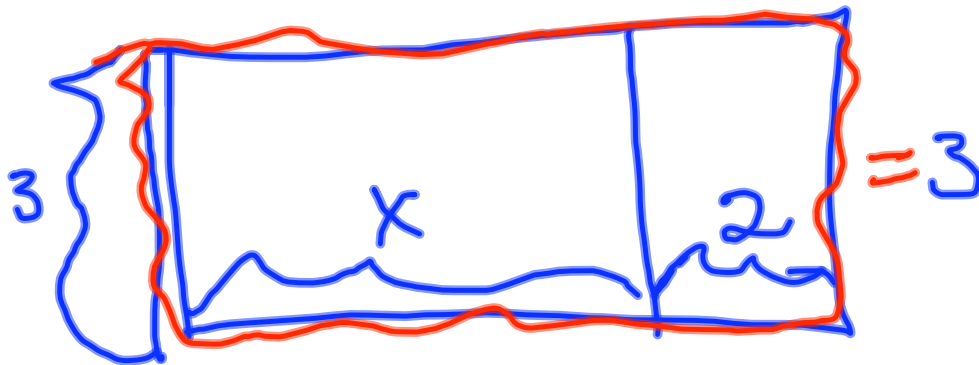
$$-5 - 10 = -5 + -10 = -15$$

Mult. a matrix by a scalar

$$\begin{bmatrix} 1 & -4 \\ 2 & -5 \\ 3 & -6 \end{bmatrix} = \begin{bmatrix} 3 & -12 \\ 6 & -15 \\ 9 & -18 \end{bmatrix}$$

3 x 2

Scalar



Base Height

$$(x+2)(3) \rightarrow 3x+6$$
$$3(x) + 3(2) = 3x+6$$

Dist Prop. of mult. over +

$$a(b+c) = \underline{ab} + \underline{ac}$$

Dist Prop of mult over -

$$a(b-c) = \underline{ab - ac}$$

$$a(b+(-c)) = \underline{ab + -ac}$$

