

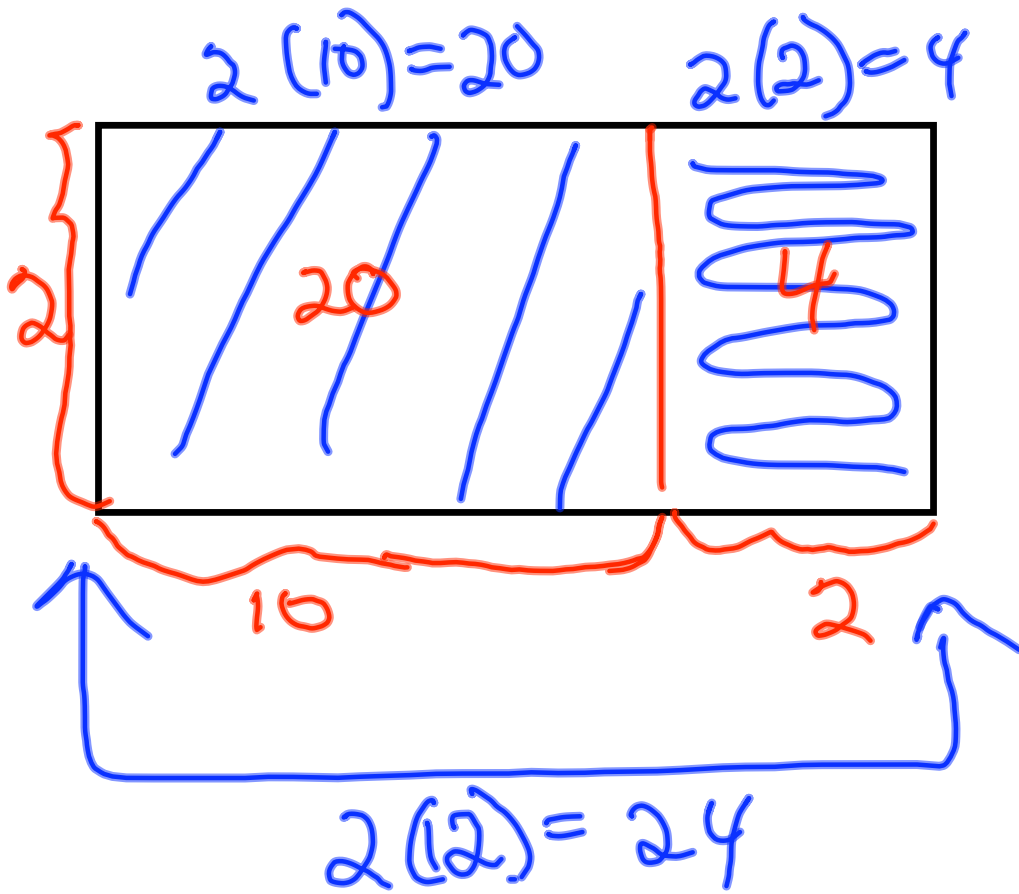
Ch 3 sec 7 10/13

Distributive Prop.

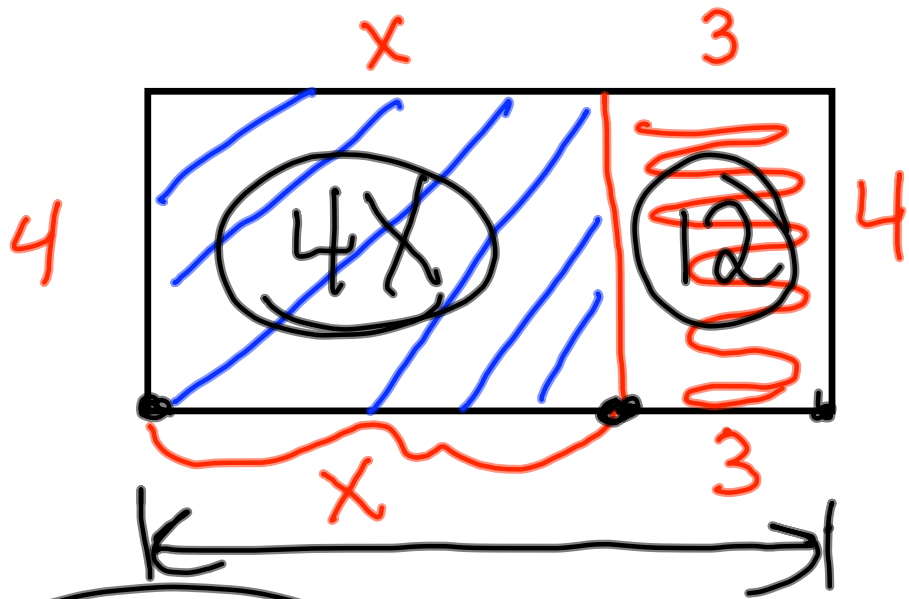
$$\underline{a(b+c)} \text{ or } a(b-c)$$

$$2(12) = \underline{2(10+2)}$$
$$24 \qquad 2(10) + 2(2)$$
$$\qquad 20 + 4$$

$$24$$



$$20 + 4 = 24$$



$4x + 12$
Area of
↑

$w = 4$

length = $x + 3$

$4(x + 3) = \underline{4x} + \underline{12}$
 $\underline{4(x)} + 4(3)$