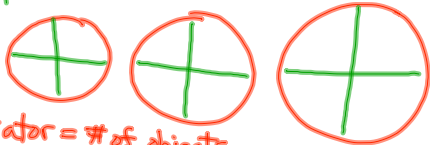


3/29

Starting next Tues. extra help will be offered at 7:30 am.

- Divide 3 hours into 4 equal parts

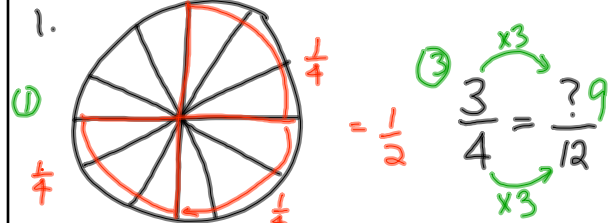
$$\frac{3}{4} \leftarrow \text{bar means division}$$



numerator = # of objects
denominator = # of parts each object is divided into

WBK 6.2

1.



$$\frac{3}{4} \times \frac{2}{2} = \frac{6}{8} = \frac{3}{4}$$

2

Ratios: comparing 2 diff things

$\frac{\text{miles}}{\text{gallon}}$	$\frac{\text{brunette}}{\text{blonde}}$	$\frac{\text{tall}}{\text{shorts}}$
$\frac{\text{kids}}{\text{moms}}$	$\frac{\text{feet}}{\text{second}}$	$\frac{\text{width}}{\text{length}}$

Important: if word problem asks for the ratio of width to length



$$\frac{3}{5} = \frac{6}{10}$$

$$\frac{7}{12} + \frac{5}{12} = \frac{12}{12} \text{ or } 1$$

7 of $\frac{60}{1} = \frac{35}{1} = 35$ ate

remains? $60 - 35 = 25$

$$\frac{5}{12} \times 60 = 25$$